

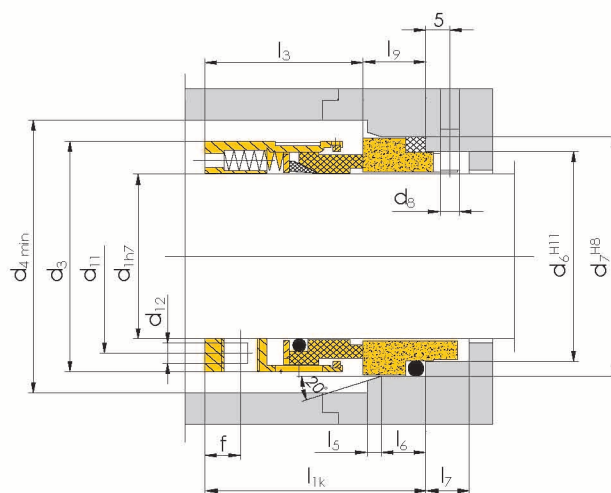
BGM59U

- ◎ 单端面
- ◎ 非平衡型
- ◎ 任意旋向
- ◎ 符合EN12756(DIN24960)标准

该系列机械密封为多弹簧结构,轴向尺寸小,结构紧凑,密封可靠,广泛应用于油、水、有机溶剂以及其它弱腐蚀性介质中。

Single seal Unbalanced Independent of direction of rotation To EN12756 (DIN24960)

This series mechanical seal is designed with multi spring structure, and is compact in structure. It has a small axial size and reliable tightness. It is widely used in oil, water, organic solvent, and other weak corrosive medium.



运行参数

规格: 14~100 mm
压力: ≤ 1.7 Mpa
温度: $-20 \sim 200^\circ\text{C}$
线速度: ≤ 25 m/s
轴向窜动量: ± 0.5 mm

Operating limits

Specification: 14~100 mm
Pressure: ≤ 1.7 Mpa
Temperature: $-20 \sim 200^\circ\text{C}$
Linear speed: ≤ 25 m/s
Axial movement: ± 0.5 mm

材料组合

密封端面:

石墨、碳化硅、碳化钨、氧化铝

辅助密封:

丁腈胶、氟橡胶、乙丙胶、PTFE

金属构件:

不锈钢

Combination of materials

Sealing face

Graphite, Silicon carbide, Tungsten carbide, Aluminum oxide

Secondary sealing

Acrylonitrile rubber, Fluorine rubber, Ethylene propylene rubber, PTFE

Metal component

Stainless steel

BGM59U型机械密封的辅助密封材料为聚四氟乙烯,可用于耐腐蚀性化工介质。

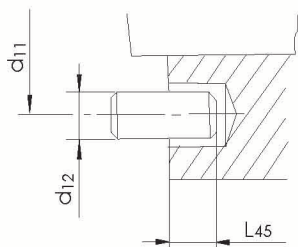
BGM58U型机械密封的辅助密封为橡胶"O"型圈。

二者安装尺寸完全一致。

The secondary seal material of mechanical seal of BGM59U is Teflon and can be used in the corrosive chemical medium.

The secondary seal of mechanical seal of BGM58U is O rubber ring.

The installation dimension of them is the same one.



左图为销子驱动的传动方式,销子由客户自备紧配在驱动件或叶轮上,安装时将机封套入销内即可,此安装对设备上机封腔尺寸要求高。

d ₁	L45
14~16	2.5
18~55	4.0
58~100	5.5

The left drawing shows the rotation driven by pin. The pin is prepared by the client himself, which is installed on the driven unit or impeller. Put the seal packet into the pin when installing. The installation has high requirement for the dimension of the upper seal chamber.

单位 (Unit): mm

d ₁	d ₃	d ₄	d ₆	d ₇	d ₈	d ₁₁	d ₁₂	l _{1k}	l ₃	l ₅	l ₆	l ₇	l ₉	f
14	24	26	21	25	2	18.4	2.5	35.0	23.0	1.5	4	8.5	12.0	4.0
16	26	28	23	27	2	20.4	2.5	35.0	23.0	1.5	4	8.5	12.0	4.0
18	32	34	27	33	3	24.5	4.0	37.5	24.0	2	5	9.0	13.5	5.0
20	34	36	29	35	3	26.5	4.0	37.5	24.0	2	5	9.0	13.5	5.0
22	36	38	31	37	3	28.5	4.0	37.5	24.0	2	5	9.0	13.5	5.0
24	38	40	33	39	3	30.5	4.0	40.0	26.7	2	5	9.0	13.3	5.0
25	39	41	34	40	3	31.5	4.0	40.0	27.0	2	5	9.0	13.0	5.0
28	42	44	37	43	3	34.5	4.0	42.5	30.0	2	5	9.0	12.5	7.5
30	44	46	39	45	3	36.5	4.0	42.5	30.5	2	5	9.0	12.0	7.5
32	46	48	42	48	3	38.5	4.0	42.5	30.5	2	5	9.0	12.0	7.5
33	47	49	42	48	3	39.5	4.0	42.5	30.5	2	5	9.0	12.0	6.5
35	49	51	44	50	3	41.5	4.0	42.5	30.5	2	5	9.0	12.0	6.5
38	54	58	49	56	4	45.0	4.0	45.0	32.0	2	6	9.0	13.0	8.0
40	56	60	51	58	4	47.0	4.0	45.0	32.0	2	6	9.0	13.0	8.0
43	59	63	54	61	4	50.0	4.0	45.0	32.0	2	6	9.0	13.0	8.0
45	61	65	56	63	4	52.0	4.0	45.0	32.0	2	6	9.0	13.0	8.0
48	64	68	59	66	4	55.0	4.0	45.0	32.0	2	6	9.0	13.0	5.5
50	66	70	62	70	4	57.0	4.0	47.5	34.0	2.5	6	9.0	13.5	6.5
53	69	73	65	73	4	60.0	4.0	47.5	34.0	2.5	6	9.0	13.5	5.5
55	71	75	67	75	4	62.0	4.0	47.5	34.0	2.5	6	9.0	13.5	5.5
58	78	83	70	78	4	67.5	5.5	52.5	39.0	2.5	6	9.0	13.5	7.5
60	80	85	72	80	4	69.5	5.5	52.5	39.0	2.5	6	9.0	13.5	7.5
63	83	88	75	83	4	72.5	5.5	52.5	39.0	2.5	6	9.0	13.5	7.5
65	85	90	77	85	4	74.5	5.5	52.5	39.0	2.5	6	9.0	13.5	7.5
68	88	93	81	90	4	77.5	5.5	52.5	39.0	2.5	7	9.0	13.5	7.5
70	90	95	83	92	4	79.5	5.5	60.0	45.5	2.5	7	9.0	14.5	7.5
75	95	104	88	97	4	83.5	5.5	60.0	45.5	2.5	7	9.0	14.5	7.8
80	104	109	95	105	4	89.5	5.5	60.0	45.0	3	7	9.0	15.0	7.8
85	109	114	100	110	4	94.5	5.5	60.0	45.0	3	7	9.0	15.0	7.8
90	114	119	105	115	4	99.5	5.5	65.0	50.0	3	7	9.0	15.0	7.8
95	119	124	110	120	4	104.5	5.5	65.0	50.0	3	7	9.0	15.0	7.8
100	124	129	115	125	4	109.5	5.5	65.0	50.0	3	7	9.0	15.0	7.8

* 配有其它非补偿环尺寸,请参照“可选非补偿环结构型式”(P52-P53页)

Please refer to the optional non-compensated ring structural specification for the details of other non compensated dimensions(P52-P53)