

BGM59B

- ◎ 单端面
- ◎ 平衡型
- ◎ 任意旋向
- ◎ 符合EN12756(DIN24960)

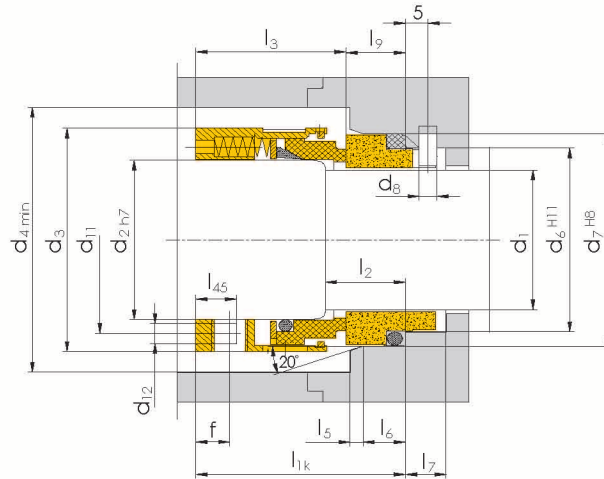
该系列密封为多弹簧结构,密封面受压均匀,安装方便,通用性好,广泛应用于油、水、有机溶剂以及其它弱腐蚀性介质中。

Single seal

Balanced

Independent of direction of rotation To EN12756 (DIN24960)

This series mechanical seal is designed with multi-spring structure and uniformly pressurized sealing face. It is easy to install and has a good interchangeability. This seal is widely used in oil, water, organic solvent, and other weak corrosive medium.



运行参数

规格: 14~100 mm
压力: ≤ 6.0 Mpa
温度: $-20 \sim 200^\circ\text{C}$
线速度: ≤ 20 m/s
轴向窜动量: ± 0.5 mm

材料组合

密封端面:

石墨、碳化硅、碳化钨、氧化铝

辅助密封:

丁腈胶、氟橡胶、乙丙胶、PTFE

金属构件:

不锈钢

BGM59B型机械密封的辅助密封材料为聚四氟乙烯,可用于耐腐蚀性化工介质。

BGM58B型机械密封的辅助密封为橡胶“O”形圈,材质可根据工况条件选择。

二者安装尺寸完全一致。

Operating limits

Specification: 14~100 mm
Pressure: ≤ 6.0 Mpa
Temperature: $-20 \sim 200^\circ\text{C}$
Linear speed: ≤ 20 m/s
Axial movement: ± 0.5 mm

Combination of materials

Sealing face

Graphite, Silicon carbide, Tungsten carbide, Aluminum oxide

Secondary sealing

Acrylonitrile rubber, Fluorine rubber, Ethylene propylene rubber, PTFE

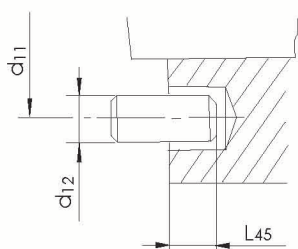
Metal component

Stainless steel

The secondary seal material of mechanical seal of BGM59B is Teflon. It is applied in the corrosion resistant medium.

The secondary seal of mechanical seal of BGM58B is "O" rubber ring. The material can be chosen according to the working condition.

The installation dimension of them is the same one.



左图为销子驱动的传动方式,销子由客户自备紧配在驱动件或叶轮上,安装时将机封套入销内即可,此安装对设备上机封腔尺寸要求高。

d ₁	L45
14~50	4.0
53~100	5.5

The left drawing shows the rotation driven by pin. The pin is prepared by the client himself, which is installed on the driven unit or impeller. Put the seal packet into the pin when installing. The installation has high requirement for the dimension of the upper seal chamber.

单位 (Unit): mm

d ₁	d ₂	d ₃	d ₄	d ₆	d ₇	d ₈	d ₁₁	d ₁₂	l _{1k}	l ₂	l ₃	l ₅	l ₆	l ₇	l ₉	f
14	18	32	34	21	25	3	24.5	4.0	42.5	18	30.5	1.5	4	8.5	12.0	5.0
16	20	34	36	23	27	3	26.5	4.0	42.5	18	30.5	1.5	4	8.5	12.0	5.0
18	22	36	38	27	33	3	28.5	4.0	45.0	20	31.5	2.0	5	9.0	13.5	5.0
20	24	38	40	29	35	3	30.5	4.0	45.0	20	31.5	2.0	5	9.0	13.5	5.0
22	26	40	42	31	37	3	32.5	4.0	45.0	20	31.5	2.0	5	9.0	13.5	5.0
24	28	42	44	33	39	3	34.5	4.0	47.5	20	34.2	2.0	5	9.0	13.3	7.5
25	30	44	46	34	40	3	36.5	4.0	47.5	20	34.5	2.0	5	9.0	13.0	7.5
28	33	47	49	37	43	3	39.5	4.0	50.0	20	37.5	2.0	5	9.0	12.5	6.5
30	35	49	51	39	45	3	41.5	4.0	50.0	20	38.0	2.0	5	9.0	12.0	6.5
32	38	54	58	42	48	3	45.0	4.0	50.0	20	38.0	2.0	5	9.0	12.0	8.0
33	38	54	58	42	48	3	45.0	4.0	50.0	20	38.0	2.0	5	9.0	12.0	8.0
35	40	56	60	44	50	3	47.0	4.0	50.0	20	38.0	2.0	5	9.0	12.0	8.0
38	43	59	63	49	56	4	50.0	4.0	52.5	23	39.5	2.0	6	9.0	13.0	8.0
40	45	61	65	51	58	4	52.0	4.0	52.5	23	39.5	2.0	6	9.0	13.0	8.0
43	48	64	68	54	61	4	55.0	4.0	52.5	23	39.5	2.0	6	9.0	13.0	5.5
45	50	66	70	56	63	4	57.0	4.0	52.5	23	39.5	2.0	6	9.0	13.0	6.5
48	53	69	73	59	66	4	60.0	4.0	52.5	23	39.5	2.0	6	9.0	13.0	5.5
50	55	71	75	62	70	4	62.0	4.0	57.5	25	44.0	2.5	6	9.0	13.5	5.5
53	58	78	83	65	73	4	67.5	5.5	57.5	25	44.0	2.5	6	9.0	13.5	7.5
55	60	80	85	67	75	4	69.5	5.5	57.5	25	44.0	2.5	6	9.0	13.5	7.5
58	63	83	88	70	78	4	72.5	5.5	62.5	25	49.0	2.5	6	9.0	13.5	7.5
60	65	85	90	72	80	4	74.5	5.5	62.5	25	49.0	2.5	6	9.0	13.5	7.5
63	68	88	93	75	83	4	77.5	5.5	62.5	25	49.0	2.5	6	9.0	13.5	7.5
65	70	90	95	77	85	4	79.5	5.5	62.5	25	49.0	2.5	6	9.0	13.5	7.5
70	75	95	104	83	92	4	83.5	5.5	70.0	28	55.5	2.5	7	9.0	14.5	7.8
75	80	104	109	88	97	4	89.5	5.5	70.0	28	55.5	2.5	7	9.0	14.5	7.8
80	85	109	114	95	105	4	94.5	5.5	70.0	28	55.0	3.0	7	9.0	15.0	7.8
85	90	114	119	100	110	4	99.5	5.5	75.0	28	60.0	3.0	7	9.0	15.0	7.8
90	95	119	124	105	115	4	104.5	5.5	75.0	28	60.0	3.0	7	9.0	15.0	7.8
95	100	124	129	110	120	4	109.5	5.5	75.0	28	60.0	3.0	7	9.0	15.0	7.8
100	105	129	134	115	125	4	114.5	5.5	75.0	28	60.0	3.0	7	9.0	15.0	7.8

* 配有其它非补偿环尺寸,请参照“可选非补偿环结构型式”(P52-P53页)

Please refer to the optional non-compensated ring structural specification for the details of other non compensated dimensions(P52-P53)