

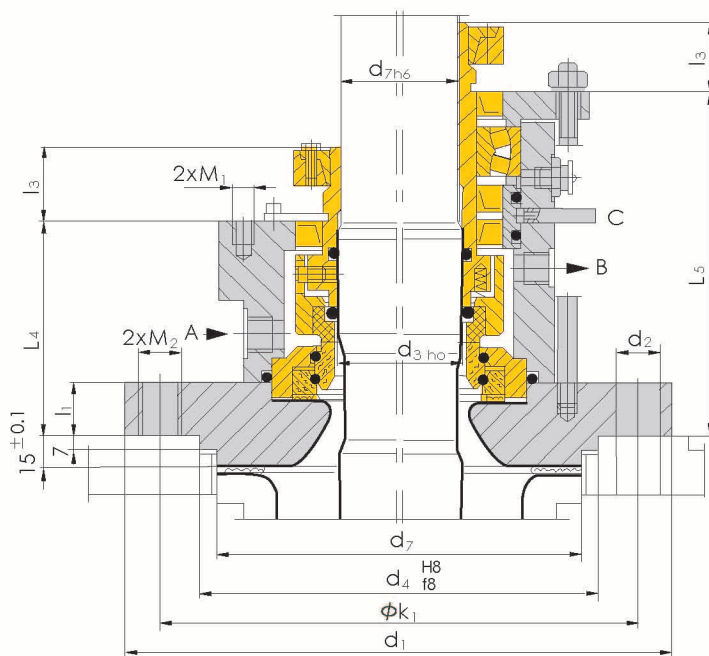
BGM461

- ◎ 非平衡型
- ◎ 任意旋向
- ◎ 集装箱式设计
- ◎ 符合DIN28137标准

BGM461系列釜用密封经预装测试,适用于搪瓷反应釜上.法兰尺寸按照DIN28137的第二部分标准,轴套尺寸按照DIN28159的标准,该系列密封与介质接触的零部件均采用非金属材料。

**Unbalanced
Independent of direction of rotation
cartridge type design
To DIN28137**

BGM461 series seal for kettle passes prefabrication test. It is suitable for enamel reaction kettle. The flange dimension is subject to the specification in Part 2 of DIN28137. The dimension of axial bush is subject to DIN28159. Its seal parts that come into contact with medium are all made of non-metal material.



运行参数

规格: 40~160 mm
 压力: ≤1.6 Mpa
 温度: -30~200°C
 线速度: ≤2m/s

Operating limits

Specification: 40~160 mm
 Pressure: ≤1.6 Mpa
 Temperature: -30~200°C
 Linear speed: ≤2 m/s

材料组合

密封端面:
 石墨、碳化硅、碳化钨、氧化铝
辅助密封:
 柔性石墨、PTFE、全氟橡胶
金属构件:
 不锈钢

Combination of materials

Sealing face
 Graphite, Silicon carbide, Tungsten carbide, Aluminum oxide
Secondary sealing
 Flexible graphite, PTFE, Perfluoro rubber
Metal component
 Stainless steel

单位 (Unit): mm

d ₃ ⁽¹⁾	d ₇ ⁽¹⁾	通径尺寸 Nominal	法兰尺寸 Flange	d ₁	nxd ₂	d ₄	d ₇	ΦK ₁	L ₁	l ₁	L ₂	l ₂	l ₃	L ₄	L ₅	M ₁	M ₂	A ₁ B ₁	A, B
40	38	40	E125	175	4x18	110	102	145	135	25	184	28	32	98	155	M12	M16	G ³ / ₈	G ¹ / ₄
50	48	50	E200	240	8x18	176	138	210	135	25	195	28	32	101	166	M12	M16	G ³ / ₈	G ¹ / ₄
60	58	60	E250	275	8x22	204	188	240	141	25	203	28	32	104	177	M12	M20	G ³ / ₈	G ¹ / ₄
80	78	80	E300	305	8x22	234	212	270	156	30	240	34	40	118	211	M16	M20	G ¹ / ₂	G ³ / ₈
100	98	100	E400	395	12x22	313	268	350	159	30	240	34	40	125	216	M16	M20	G ¹ / ₂	G ³ / ₈
100	98	100	E500	395	12x22	313	268	350	171	30	240	34	40	125	216	M16	M20	G ¹ / ₂	G ³ / ₈
125	120	125	E700	505	4x22	422	306	460	184	30	266	40	45	127	230	M20	M20	G ¹ / ₂	G ³ / ₈
140	135	140	E700	505	4x22	422	306	460	190	30	282	40	45	130	238	M20	M20	G ¹ / ₂	G ³ / ₈
160	150	160	E700	505	4x22	422	306	460	190	30	282	40	45	138	240	M20	M20	G ¹ / ₂	G ¹ / ₂
160	150	160	E900	505	4x22	422	306	460	190	30	282	40	45	138	240	M20	M20	G ¹ / ₂	G ¹ / ₂
160	150	161	E901	565	4x26	474	356	515	190	30	282	40	45	138	240	M20	M20	G ¹ / ₂	G ¹ / ₂

- 注: 1) d₃, d₇尺寸符合DIN28159标准 2) 法兰尺寸符合DIN28137T2标准 3) A₁, B₁相当于A, B(是双端面密封尺寸)
 4) L₁是双端面尺寸(是l₃+L₄-l₁) L₂是双端面尺寸(是l₃+l₅-l₁) l₂是双端面尺寸(是单端面l₃处相同间距)
 5) 特殊规格尺寸, 可依客户加行设计

- Note: 1) d₃ and d₇ comply with DIN28159 2) The flange dimension comply with DIN28137T2
 3) A₁ and B₁ are equal as A and B (double ends face seal dimension)
 4) L₁ is double ends face dimension (l₃+L₄-l₁), L₂ is double ends face dimension (l₃+ l₅-l₁), l₂ is double ends face dimension (with the same gap as the single end face l₃)
 5) Special dimension which can be designed according to the requirement of client